



Have You Paid Your Dues Yet?  
See page 6 to read about our 2011  
NRPCA Membership Drive!

Your involvement is crucial to  
our survival!

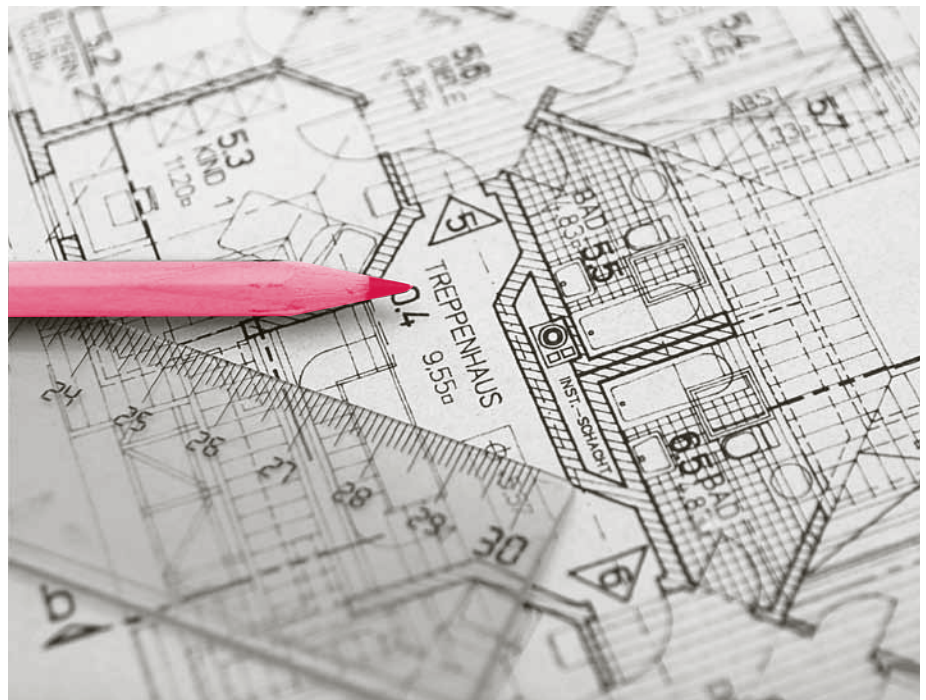
**ANNUAL  
EASTER EGG HUNT**  
April 23rd  
11:00AM - 1:00PM  
see page 3 for details

**DETROIT  
PROJECT DAY**  
Saturday, April 2, 2011  
see page 11 for details

#### IN THIS ISSUE:

General Membership Meeting.....	1
Letter from the President.....	2
Easter Egg Hunt.....	3
Community House Capital Campaign.....	3
Yoga Classes.....	4
NRPCA Steak Roast.....	4
6th Annual Open House.....	5
Revising NRPCA By-Laws.....	5
NRPCA Membership Drive.....	6
Keep Your Dog on a Leash.....	6
Planning for June Day 2011.....	7
2011 Home & Garden Tour.....	7
Block Captain's Meeting.....	7
GRDC Update.....	9
Learn how to Hustle.....	11
Detroit Project Day.....	11
Community House Calender.....	11
Support our Business Members.....	11
Membership Application.....	12
Board of Directors' List.....	12

## NRPCA GENERAL MEMBERSHIP MEETING THURSDAY, APRIL 14, 2011



### 7:00 PM

Detroit Collaborative Design Center, University of Detroit Mercy  
School of Architecture, presentation on feedback from  
Community Engagement Workshop on renovation of the  
Community House and grounds. Hear about on-going processes  
for continued community input. See page 3 for details.

### 8:00 PM

Proposed revisions to NRPCA Constitution and By-Laws.

These are two of the most important topics  
we will be dealing with this year!  
See page 5 for further information.

*The Rosedale Tattler is a publication of the North Rosedale Park Civic Association. Established in 1924, the North Rosedale Park Civic Association is a community organization that promotes the interests and welfare of North Rosedale Park residents, maintains park facilities for community use, advocates for necessary public improvements, and enforces building restrictions and ordinances within North Rosedale Park.*

# Letter from the President

## Report Card to the Community

Your Board of Directors has been busy! Here's what's been happening:

### Proposed Amendments to By-laws

Last updated in 1995, By-laws amendments proposed in October 2008 were never approved due to lack of a quorum at General Membership meetings. This board has committed to getting membership approval by May of this year. Thanks to the work of Jim Johnson, Marcia Closson, Bill Frey and Lynn Garrett, the 2008 proposal has been revisited and further revised, and was approved by the board at its special meeting on March 10. A reading is scheduled for the April 14 General Membership meeting. We will need 50 members present for the final reading and vote in May. Plan to be there! (Related article, page 5)

### Legal Status

NRPCA's application to Community Legal Resources (CLR) for legal assistance in determining the most appropriate organizational structure for our organization and the Community House was accepted. We are delighted to be receiving the pro bono services of John Burns, legal counsel for Plunkett Cooney, to explore this with us. John is a former resident of North Rosedale Park, having lived just three houses from me on Shaftsbury. His work is crucial in helping

to answer the following questions related to a Capital Campaign for the Community House:

- Convert from our 501(c)(4) currently to a 501(c)(3)?
- Stay a 501(c)(4) and utilize the services of a 501(c)(3) organization as fiduciary for the Capital Campaign?
- Consider a 501(c)(7) or 501(c)(9) or separate non-profit?



### Roof Repair

The Board of Grandmont Rosedale Development Corporation approved our request to act as fiduciary for the replacement of the flat roof on the Community House. However, in order to avoid "fundraising fatigue" on the part of our supporters (resulting from one campaign now for the roof and a later one for major renovation of the Community House), the NRPCA Board voted to take the cost out of NRPCA's reserve account, after verifying there would be no impact on our financial stability this year and on condition that the first funds raised from the Capital Campaign would repay the money. Goal for the roof repair: April 1st!

### Community House Assessment

The contract's signed and work is underway towards the U of D Mercy Detroit Collaborative Design Center's conceptual design of the Community House. You'll want to attend the April 14 General Membership meeting to hear more details. This project, valued at \$34,000 and offered pro bono to NRPCA, is made possible through a Kresge Foundation grant to the university. Our appreciation to U of D Mercy and the entire Design Center team!

### Rental Rates

How do rental rates for use of the Community House compare with similar venues? This is one of the questions asked by the Board in setting its agenda for this year and in assessing our revenue stream in light of increasing costs. The Community House is in great demand for weddings, receptions, family reunions, and funeral repasts. No wonder – our prices are low! The board will be discussing the recommendations of Board Director Betty Redditt and Building Manager Nicole Daniels on a rate adjustment.

### Activities at the Community House

With all this seriousness, we have to have a little fun! Thanks to Board Director Debra Norfleet for initiating Yoga-laties at the Community House and now \$5 Wednesdays once a month. Join us for the Hustle from 6:30-8:30 PM on April 6th and read future Tattlers for upcoming surprises.

## Enjoy the Benefits at Peoples Trust

- Savings Programs
- 24/7 Account Access
- Low-Rate Loans
- Mortgages & Equity Loans
- Budget Counseling
- Financial Planning

**Peoples TRUST**  
CREDIT UNION  
*Your Financial Home*

Main Office  
24333 Lahser Road • Southfield, MI 48033  
Call for other locations  
248-263-4100 • 866-600-7828  
www.peoplestrustcu.org

# ANNUAL EASTER EGG HUNT

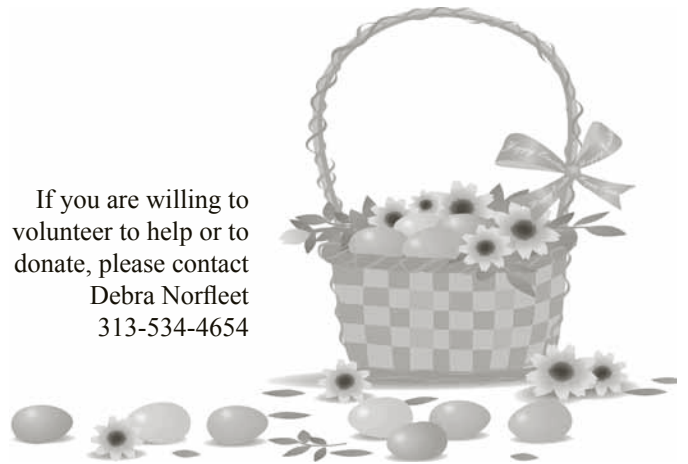
*Sponsored by North Rosedale Park Civic Association*

**North Rosedale Community House • 18445 Scarsdale  
April 23rd 11:00AM - 1:00PM**

The NRPCA Easter egg hunt is great fun. The event is free. Children up to age 10 are welcome to participate.

There will be a Golden egg contest, prizes and egg hunting. For a small fee have your child's picture taken with the Easter Bunny. Most events will occur outdoors. Be sure to bring your basket to collect eggs. Donations are needed for candy and new books.

If you are willing to volunteer to help or to donate, please contact  
Debra Norfleet  
313-534-4654



## April 14, 2011 • NRPCA Building Renovations

Jim Johnson

The Community House will not only host a NRPCA General Membership Meeting at 7:00 PM on April 14; it'll also be on the agenda. That's right; it has a dual role. As mentioned in the March Tattler, the Detroit Collaborative Design Center, University of Detroit Mercy is assisting the North Rosedale Park community with developing a conceptual design for the renovation of the Community House and grounds. On April 14 they'll provide feedback on the information they received from a Neighborhood Engagement Workshop they facilitated on March 31 with representatives of the many stakeholders who use these facilities. Just as important, they will describe how the community input process will continue throughout the spring. One avenue for input will be a journal that will reside in the Community House for everyone to express their feeling on future directions

for the Community House and grounds. Of course, sometimes the door is locked, so plans are in process to provide a "box" near the Community House door with cards that can be filled out and dropped in the mail box. Then there's

the internet ... Please come to the April 14 meeting. The Community House has a story to tell. When it finishes there will also be information on the proposed revision to the NRPCA By-Laws that you'll want to hear.



### UPCOMING EVENTS

**April 2 ..... Detroit Project Day  
9:30 AM to 2:30 PM Community House**  
**April 5 ..... Block Club Captains Meeting  
6:30 PM (GRDC)**  
**April 7 ..... NRPCA Board Meeting  
6:30 PM Community House**  
**April 14 .... General Membership Meeting  
7 PM Community House**  
**April 23 .... Annual Easter Egg Hunt  
11 AM Community House**

**April 28 .... Neighborhood Safety Meeting  
6 PM Community House**  
**May 1..... Neighborhood Open House  
1:00 - 5:00 PM**  
**May 3..... Block Club Captains Meeting  
6:30 PM (GRDC)**  
**June 11..... June Day  
All Day at the Community House**

## NEIGHBORHOOD BUSINESS DIRECTORY

This directory of ads is only available to Park residents to inform neighbors of the businesses and services they offer.

### MITCH'S PAINTING SERVICE

Homes (Inside and Out) Garages, too!  
534-7023 • 282-4921

### JAFRA COSMETICS

**Ina M. Grant**

Join me on Facebook at Ina Grant's Jafra  
313-535-1310 • inagrantsbcglobal.net

### MARIA ENTERPRISES

General Sewing Needs • Alterations • Tailoring • Dressmaking  
Maria Bryant • Detroit, MI 48291 • 313-537-1560

## Piano & Guitar Lessons

For the Young and the Not-so-young  
Park Resident 255-1627

## NRPCA Annual Steak Roast Friday, September 9, 2011

Would you like to be on the committee  
or volunteer for the event?

Please call Debra Norfleet 313-534-4654  
for more information



## YOGA

is in the Community House  
on Monday's and Wednesday's

**10:00AM – 11:00AM**

**\$80.00 for 4 weeks, payable in advance**

**Contact, Debra Norfleet 313-534-4654  
or Nicole Daniels 313-837-3416**



"Irrigation Solutions, Done Right"

Residential & Commercial

**Milton E Graham Sr.**  
Owner

Office: (313) 836-9233  
Cell: (313) 330-4473  
Milton@kingsprinklerservice.net

Installation • Spring Turn-Ons • Winterization  
Repair • Lawn Maintenance • Snow Removal

**KingSprinklerService.net**

Washer & Dryer Repair Since 1980

Washer

Dryer

**A-1**

Service

No Service charge if repaired.

Servicing most makes & models.

Rosedale Park Resident. (313) 838 - 1149



**COMPANY'S COMING  
TO GRANDMONT ROSEDALE!**

## **6TH ANNUAL NEIGHBORHOOD OPEN HOUSE**

**SUNDAY, MAY 1, 2011 • 1:00 – 5:00 PM**

**WELCOME CENTER  
North Rosedale Park  
Community House  
18445 Scarsdale**

**Registration  
Neighborhood Bus Tours  
Home Loan and Tax Abatement Information  
Open Houses of Homes for Sale**

**For more information:**

**[www.grandmontrosedale.com](http://www.grandmontrosedale.com) or call 313-909-0760**

## **NRPCA CONSTITUTION and BY-LAWS REVISION**

The Constitution and By-Laws of NRPCA have been revised by the Board and are ready for your review and feedback. This is a lengthy process under the current By-Laws that requires an initial reading at a membership meeting, posting in the Community House for one month, and a final reading at another membership meeting and a two-thirds majority vote of the members present. The NRPCA Board in 2008 proposed revisions to the By-Laws, but, because the second membership meeting lacked a quorum to conduct business, their proposed By-Laws were not enacted. The recent revision committee of Marcia Closson, Bill Frey, Lynn Garrett, and Jim Johnson have built on the foundation laid in 2008 and added further updates. These were approved at a special Board meeting on March 10, and the document is now ready for your review and approval.

Many of the proposed changes to the By-Laws are descriptive, such as adding zip codes, and don't substantially change the document. However, there are changes that you should be aware of. Highlights of these include:

- The addition of two new articles describing the Board's non-partisan policy on public political campaigns and on protection and indemnification of directors and officers.
- Age requirements for resident and non-resident members are described.
- The processes to become a member, as well as to be reinstated as a member if dues are unpaid, are streamlined.
- Email is now included as a process to send meeting notices as well as to carry on Board actions outside of a meeting.

- The quorum for Association action at membership meetings is changed from not less than fifty members to not less than ten percent of the resident and life members.
- Further descriptions of the process for electing directors are added.
- The building manager duties are clarified. In particular, the duty of being the assistant treasurer is removed in accordance with the recommendations in NRPCA's recent audit.
- The Association's check signing duties are changed consistent with the revision of the building manager's duties.
- The balloting procedure for NRPCA elections is clarified.
- The process to amend the By-Laws is streamlined, and email communications are added to the process.

Consistent with the current By-Laws, the presentation of the proposed revisions will proceed as follows.

- The first reading of the By-Laws will occur at the April 14 NRPCA Membership Meeting.
- The current and proposed By-Laws will be posted in the Community House beginning on April 14.
- The second reading of the By-Laws will occur at a May 12 NRPCA Special Membership Meeting, followed by the membership vote on their approval.

Community participation is very important to this process, especially at these important meetings. Please make an effort to attend.

By Jim Johnson

---

# Membership Committee Looking for Volunteers

The newly formed Membership Committee, created to help expand the outreach capacity of the Membership Secretary's role, is planning a number of activities to increase the number of paid members for 2011. Although the committee's plans are ambitious, we hope the excitement and momentum will attract more volunteers, also interested in increasing membership by a minimum of 100 new members this year!

Below is a brief outline of the committee's strategies to increase membership, the committee members has agreed to:

- Ask a neighbor and/or a friend to join NRPCA. Each committee member has pledged to get at least one new member; It's simple, but this is one act. If everyone reading this article, would ask one neighbor to join, we could exceed the goal of 100 new members easily, this is a just first level," reach one to teach one" the value of becoming a NRPCA member. Most of us know one person living here, neighbor or friend who would join NRPCA, if they were asked! Are you willing to ask someone?
- Help support block club captains, providing input on developing new neighbor information packets or literature; We want to find some fun incentives for blocks with the most members;
- Help NRPCA incorporate more technology to reach residents and business owners to increase awareness about events and activities. We need volunteers to help with updating Website, developing Facebook, Text message alerts, etc. If you are willing to help us "reach-out", utilizing a variety of technologies please contact me.
- Develop a survey to get input from members, residents, business owners about their feelings about our community including ideas about events, activities; the best way to keep them informed & engaged. To assure full participation, we will use several strategies for getting the survey completed. Door to door:

look for neighbors with special T-shirts and/or hats identifying them as NRPCA volunteers. The Tattler: surveys will be located inside future issue(s). We will also have copies of the survey available to pick-up from the community house and available online just in case you're not home when the volunteer visits. We value your opinion, please share your ideas, concerns and sign-up to volunteer for an activity.

- Develop and implement a "membership outreach campaign", to literally try to "touch" as many residents as possible to encourage neighbors to join NRPCA; this strategy will involve as many block club captains and other volunteers who are willing to "walk their block" to encourage membership. Several training sessions will be planned and information about how to get a T-Shirt and/or cap. We are looking for low cost quality items at affordable prices. More details will follow soon.
- Recruit volunteers to help with mailings. We need help with membership letters and second notices every year. This is a big job. We really would need a "mailing captain" to help recruit volunteers to stuff envelopes, put on labels, stamps, etc. as needed.
- Plan several "new neighbor" open houses" events , to provide a tour of the community house and find out what's great about living in North Rosedale Park;
- Plan a new member's reception, another opportunity for neighbors to gather, to eat and meet each other, again while learning what makes our community special and how to help make it a better place to live, work and play.

Wow, this is a lot, and it will only help happen if we get a number of excited, committed volunteers. If you want to join us in our outreach efforts, please contact me at [kjmoore21@sbcglobal.net](mailto:kjmoore21@sbcglobal.net) or 313-592-1912 and leave a message. I'll return your call as soon as possible.

Since publishing last month's membership list, an additional 28 residents have renewed their membership and 3 residents have joined as 'new' members.

The membership totals as of March 14, 2011 are: 106 Life members, 319 Resident members, 21 Non-Resident members, 32 Business members.

Thank you for supporting our Civic Association:

---

## New Resident Members:

Karieem Allen  
Tammy McCrory  
Darrell and Tracy Marino

---

## Renewed Resident Members:

Sandra Anderson  
Regina & Paul Baker  
Michael & Renee Bouey  
Cynthia, Berry and Brandon Greer  
Alfred & Rosemarie Brown  
Ronald & Edith Colston  
Cliff & Sandra Green  
Earl & Sharon Harris  
Myisha Hinton  
Carmyn Brown & Opralee Beatty  
Nigel Patterson  
Victor & Victoria Fleming  
Lemuel and Aijha Joyner  
Larry & Shirley Kitchen  
Kym and Richard LeGreair  
Johnny & Latisha Malcom  
Ellis Martin  
Angela Reynolds  
Priscilla Miller Summers  
Cornelius & Shirley Myrick  
Joseph & Jean Ramsey  
Ronald & Sandra Schultz  
Ernest & Barbara Smith  
Anthony & Lillian Stevenson  
Robert & Cheralyn Suggs  
Charles & LaVonne Thomas  
Roland & Rosa Woods  
Anthony Hawkins

---

## Non-Resident Member:

Cornell Clark

---

## Being a Responsible Dog Owner

A friend called me to warn me about an incident that occurred in North Rosedale Park. A gentleman was walking his dog on leash and another dog with his owner, but not on leash,

attacked his dog. The owner of the dog that was attacked had to rush his dog to the Vet, and the cost was considerable. A police report was made, but the point is if you walk your dog anywhere in the

Park it needs to be on leash, no matter how well trained. It is the responsible thing to do.

Judy Barkey, Sunderland  
Owner of April, the Wonder Dog

# Volunteers Needed for June Day 2011 Planning Committee

Planning is underway for the 81st Annual June Day. This year's date is Saturday June 11, 2011. Our Committee has met a couple of times but we would love to hear about your ideas. There are many events that you can help organize such as:

- Run for the Roses race
- June Day parade
- Floats for the June Day parade
- Midway games & entertainment
- Rosedale Café
- Evening Concert

Remember, many hands make light work! This year is going to be a stellar event.

Please contact Michelle Loggins 313-231-0128 or email her at michellerloggins@yahoo.com.



## 2011 North Rosedale Park Home And Garden Tour

September 17, 2011

It is not too late! Please join us. Do you have a beautiful garden or live in one of North Rosedale Park's architectural gems? How about having your home and or garden considered for the 2011

tour? The Home and Garden Tour Committee is a group of committed community minded people working to improve the quality of life in our unique neighborhood. We are also looking for

like minded people to join the Home Tour Committee. Whether it is to open your home or volunteer to work on the tour, we hope to hear from you soon. Contact: Betty Redditt (313) 838-3256.

### THE NORTH ROSEDALE PARK BLOCK CAPTAINS MEETINGS

are the first Tuesday of every month at the Grandmont Rosedale Development Corporation (GRDC) offices at 19800 Grand River (near Evergreen) at 6:30pm.

This vitally important group of community leaders needs your support. If you have a neighborhood concern that needs to be resolved, please contact your Block Captain or if you don't know who your Block Captain is, please contact Clarendia Webb at (313) 330-7844 for more information.

Our next meetings are Tuesdays, April 5 and May 3, 2011.  
We need your involvement now more than ever.

## \$20-\$25 Residential Snow Removals

Let us take the hassle out of removing snow from your property

For a small fee we can remove snow and also salt your driveway, walkway, and porch.

Call Now For A Free Estimate At  
**313-836-9233**

Or E-mail Us At  
 James@KingSprinklerService.net



**SPRINKLER SERVICE**

Serving the community for over 15 years



**JAMES L. DUSING**  
 Cell: 586-855-0669

**Dusing Security & Surveillance**

*"Providing Reliable Solutions For All Your Low Voltage Needs"*

- Security Systems • Remote Surveillance Cameras
- Fire Alarms • 24 Hour Alarm Monitoring

P.O. Box 256, Anchorville, MI 48004  
 Phone: 586-779-5002 Toll Free: 866-SAFE-DSS Fax: 810-794-5319  
 www.safewithdss.com Email: jdusing@safewithdss.com

"Did you know Dusing Security offers BOTH your patrol service and alarm monitoring for \$30.00/month!"

**IMAGINE - TWO SERVICES FOR \$1.00 PER DAY!!**  
 Call 586-779-5002 for details!!

**NEW FINISH LANDSCAPING**  
 A NEW FINISH IS ALWAYS THE BEST FINISH

Licensed and Insured

CALL FOR YOUR FREE ESTIMATE  
 313.802.1350 or 313.802.1450  
 Dearborn Heights, Michigan

Follow North Rosedale Park on Facebook or visit us on our website at  
<http://northrosedalepark.org>

*Michael C. Hudgins, D.D.S.*  
**GENERAL DENTISTRY**

19001 GRAND RIVER AVENUE  
 DETROIT, MI 48223

TELEPHONE (313) 838-6679



*D.*  
*D.*  
*S.*

**DR. PAULA CARSON**

*Your Family Dentist*

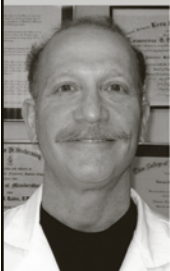
18616 W. McNichols  
 Detroit, MI 48219  
 Phone (313) 532-1115  
 Fax (313) 255-4523

28245 Southfield Rd.  
 Lathrup Village, MI 48076  
 Phone (248) 423-9000  
 Fax (248) 423-9020

*Office Hours By Appointment*

## Dr. Lawrence Rubin

Diplomate, American Board of Podiatric Surgery



**FOOT & ANKLE SPECIALIST SINCE 1979**

Treating all foot & ankle problems  
 Medical • Surgical • Orthopedic • Diabetic Care

**18530 Grand River, Detroit • (313) 273-9400**  
 2 blocks west of the Southfield Freeway

Al Baumgardner  
 Co-Owner

Jim Baumgardner  
 Co-Owner

### **BAUMGARDNER MECHANICAL, INC.**

Heating, Cooling, Plumbing & Electrical  
 24850 W. McNichols  
 Detroit, MI 48219

Licensed & Insured  
 #71-04661

(313) 537-1600  
 Fax (313) 537-2801



# GRANDMONT ROSEDALE DEVELOPMENT CORPORATION

## LOOKING FOR A HOME IN GRANDMONT ROSEDALE?

Calling all prospective homebuyers! GRDC is currently renovating several homes in the Grandmont Rosedale area. If you, or someone you know, is interested in purchasing one of these beautifully updated, energy-efficient and highly affordable homes, call GRDC today at 313-387-4732, ext. 104 or email to [tmccrory@grdc.org](mailto:tmccrory@grdc.org).



You can also visit our web site at <http://www.grdc.org>, to view a few of GRDC's current renovation projects.

## HOMEBUYER WORKSHOP ON

**THURSDAY, APRIL 28** – If you are interested in learning more about the process of buying a home, mark your calendars now for Thursday, April 28 from 6:30 – 8:30 PM.



GRDC's Home Ownership Program Manager Brad Mattison will be leading a FREE workshop at GRDC's headquarters, 19800 Grand River. Come learn what it takes to get a mortgage in today's market!

Please call to register – 313-387-4732, ext. 101. The workshop is free but space is limited, so call to reserve your seat.

## PREVENT IDENTITY THEFT WORKSHOP

**ON APRIL 9** – GRDC's Community Security Program will host an Identity Theft Prevention Workshop on Saturday, April 9th from 10

AM - noon at the GRDC Office (19800 Grand River Ave). This topic was selected through a community survey.

Award-winning author and trainer Johnny May brings his national expertise on identify theft to the Grandmont Rosedale community. As a renowned security consultant, May specializes in protecting individuals, as well as organizations, and is also credited with developing the nation's first college-level course on identity theft. He's been featured in the New York Times, Consumers Digest, and Black Enterprise, as well as NBC's Nightly News and other television and radio talk shows.

To learn more about Johnny May, visit [www.identitytheftinfo.com](http://www.identitytheftinfo.com). For more information about the upcoming workshop or other community security questions, contact Jeremy Orr, GRDC Community Security Coordinator at 313-387-4732, ext. 109 or [jorr@grdc.org](mailto:jorr@grdc.org).

The workshop is free, but seating is limited. If you wish to attend, please RSVP with Jeremy Orr to reserve your seat, and insure that we will have enough handouts and refreshments for you all.

## HELP WANTED: NEIGHBORHOOD

**AMBASSADORS** – If you love the Grandmont Rosedale neighborhoods and want to encourage their progress, consider becoming a neighborhood ambassador.

GRDC is looking for volunteers to help market the foreclosed homes GRDC has purchased. These homes are currently undergoing renovation and will soon be for sale, bringing new neighbors to our blocks. Enthusiastic neighborhood boosters are invited to join a team of neighborhood ambassadors who will assist during weekly open house showings of these beautiful homes.

Briefing sessions will be held before the scheduled open houses. Information specific to each home and its wonderful community will be provided as talking points to enable neighborhood ambassadors to explain to prospective new neighbors the bountiful benefits of becoming part of our community.

The first Open House is Sunday, May 1st. An ambassador training session is scheduled for Wednesday, April 13 at 6:30 PM at the GRDC office, 19800 Grand River. If you are interested in becoming a neighborhood ambassador, please contact GRDC Intern Lisa Danovich at 313-387-4732, ext. 100 or [ldanovich@grdc.org](mailto:ldanovich@grdc.org).



**RECREATIONAL SOCCER FOR GROWN-UPS** – Are you looking for a way to have fun, get some exercise, and show off your

neighborhood pride all at the same time? Then sign up to represent Grandmont Rosedale in the Detroit City Futbol soccer league.

Detroit City Futbol is a co-ed recreational soccer league made up of teams representing various neighborhoods in Detroit. The league is for players 18 and older of all skill levels. Competition is friendly and no prior soccer experience is required.

Last year, there were teams from 11 different neighborhoods, including Corktown, Midtown, The Villages, and Green Acres. Why not Grandmont Rosedale? Games are once a week and the season runs May through July. Games will be played weekday evenings at Belle Isle or Fort Wayne.

For more information, contact Tom Goddeeris at [tgoddeeris@grdc.org](mailto:tgoddeeris@grdc.org) or 313-387-4732, ext. 111. To learn more about the league, visit [www.detroitcityfutbol.com](http://www.detroitcityfutbol.com).

**FORECLOSURE PREVENTION** – If you or someone you know is in danger of foreclosure, DON'T DELAY. Foreclosure counselors are available from Southwest Housing Solutions. Homeowners who are behind on their mortgage payments should contact the free non-profit counselors immediately, while they still have options – call 313-841-9641 TODAY for an appointment with a counselor.

**VACANT HOUSE ALERT** – Do you have any vacant houses on your block? If so, please give GRDC Intern Austin Grout a call at 313-387-4732, ext. 100, and tell him the address (or email him at [agrout@grdc.org](mailto:agrout@grdc.org)). In cooperation with all of the neighborhood associations, GRDC is trying to keep track of all of the vacancies and we need your help! We're developing a Vacant Property Strategy and it's important to keep up to date on every vacancy. Thanks for being a good neighbor.

## VACANT PROPERTY DATABASE HELPERS

**NEEDED** – If you have a few hours to spare, we can put you to work entering information into our Vacant Property Database. Interested volunteers can call GRDC Administrative Assistant Tammy McCrory at 313-387-4732, ext. 104 or send e-mail to [tmccrory@grdc.org](mailto:tmccrory@grdc.org) for more details.

**GET THE GRDC E-MAIL BLAST!** – GRDC has been operating a neighborhood-wide listserv; we send out regular weekly notices to let everybody know what's going on in our neighborhood. Don't miss out on the latest! If you want to know what's happening, send us your e-mail address. We'll add you to our electronic mailing list and periodically send you information of interest to the neighborhood. Send an e-mail to [tmccrory@grdc.org](mailto:tmccrory@grdc.org) and ask to be added to the list.

## A better place to get better.

2007 **Top DOCS**  
74 DMC Docs Recognized



HOOR Magazine's  
**Best Hospital**  
for ACCIDENT/TRAUMA CARE

**DMC**  
**Sinai-Grace**  
**Hospital**

www.sinaigrace.org  
1-888-DMC-2500



PROMPT • PROFESSIONAL • COURTEOUS

## Need help with your lawn? Call 1-888-4-LAWN HELP (888-452-9643)

When it comes to creating thick, green lawns, depend on Greener Still, Inc. Our professional programs and experienced technicians can give you a lawn your whole family will enjoy. And, since we're a local company, we get to know you and your individual lawn needs. Depend on us to deliver what your lawn really needs...when it needs it...all season long.

- Fertilization/  
Weed Control
- Aeration/Seeding
- Expert Tree Care:  
Removal, Trimming,  
Spraying & Feeding
- Insect Control
- Sprinkler System  
Installation/Service

**Call Greener Still, Inc. today  
for a personal, no-cost evaluation of your lawn care needs.**

TURF & TREES

**greener still inc.** ...a grOWing concern

State Licensed  
and Insured

TURF AND TREE EXPERTS SINCE 1965

**Toll-free 1-888-4-LAWN HELP**  
(888-452-9643)

Major credit cards accepted

## Discount RATES without discount SERVICE.



It's no accident more people trust  
State Farm to insure their cars.  
Call today.

**Theodore C Brown Ins Agcy Inc**  
Theodore Brown, Agent  
Southfield, MI 48076  
Bus: 248-352-4757  
ted.brown.j47u@statefarm.com

LIKE A GOOD NEIGHBOR



STATE FARM IS THERE.®

Providing Insurance and Financial Services

State Farm Mutual Automobile Insurance Company (Not in NJ), Bloomington, IL

P040034 12/04

## C & M Landscaping, Inc. 313-592-8118 Licensed & Insured Free Estimates

### Custom Brick Paving

- Walks, Patios, Porches
- Steps, Retaining Walls, Drives

### Landscaping

- Weekly Maintenance
- Spring & Fall Clean up
- Mulch Installation
- Landscape Installation
- Sprinkler System

### Tree & Shrub Care

- Removal & Trimming
- Deep Root Fertilizing
- Micro-Injection
- Stump Grinding

## \$5 Wednesday's

Each month will feature an activity  
at The Community House

**COME ON OUT AND HUSTLE**  
**WEDNESDAY, APRIL 6TH • 6:30PM - 8:00PM**

Dance your favorites and learn a new one.

Concessions available.

Hustle Instructor - Betty Clark



## Detroit Project Day

### Saturday April 2, 2011

### 9:30am -2:30pm

Volunteers from the University of Michigan will be descending on NW Detroit for a day of service. We have 4 teams coming to NRP to work in our community.

- 1) Southfield Service Drive Cleanup
- 2) Community House Grounds Cleanup
- 3) Cleanup on the West Outer Drive Median
- 4) Planting 70



new trees with the Greening of Detroit on Stahelin between Puritan and McNichols.

We need representation from our neighborhood. If you can give an hour or two, please grab your work gloves and head over to the Community House Grounds at 9:30am or go directly to one of the work sites. Call Jeffery Knight at 313-461-5673 to volunteer, or just meet at the Community House Grounds at 9:30am.

Please help them help us Beautify our Neighborhood.

## Deadline for the Tattler

*The Rosedale Tattler* is a monthly newsletter published by the NRPCA. All articles and advertisements are due the 10th of each month. Please contact **Maria Bryant** at 313-537-1560 or [mariab19@sbcglobal.net](mailto:mariab19@sbcglobal.net) for advertising rates and policies. Please submit articles to [NRPCA\\_TattlerEditor@Yahoo.com](mailto:NRPCA_TattlerEditor@Yahoo.com).

We welcome and encourage submissions.

The author's name, address and phone number is required for publication. The editorial staff reserves the right to edit submissions for space or for which they deem obscene, defamatory, deceptive or misleading.

## NRPCA Calendar

### April 2011

1 SHOW..... 8pm	15 Rental..... 8pm
2 SHOW..... 2pm	16 Rental..... 9pm
3 Show Tear-Down .....	17 Rental..... 4pm
4 Yoga Class ..... 10am	18 Yoga Class ..... 10am
6 Yoga Class ..... 10am	20 Yoga Class ..... 10am
6 Hustle Class ..... 6:30pm	22 Rental..... 8pm
7 Board Meeting ... 6:30pm	25 Yoga Class ..... 10am
7 Rental..... 7pm	27 Yoga Class ..... 10am
11 Yoga Class ..... 10am	28 Neighborhood Safety Meeting..... 6pm
13 Yoga Class ..... 10am	30 Rental..... 3pm
14 General Membership Meeting..... 7pm	

## Please Support our NRPCA

### Business Members

- Bel Aire Cleaners
- Beverage 1
- Center for Literacy and Creativity
- Dr. Lawrence B. Rubin
- Dusing Security & Surveillance
- Elias Donuts
- Fellowship Chapel
- Frank F. Lanzilote, D.O.
- Gospel Church of Faith
- Grandmont Rosedale Development Corp.
- Greener Still, Inc.
- John Cash State Farm Agency
- KB's On the River
- McDonald's Restaurant #567
- Metro Foodland, Inc.
- Michael Hudgins, DDS
- Mitch Painting Service
- National Tax Services Detroit
- Optimum Dental Lab
- Parklane Cork & Bottle Inc.
- Paula G. Carson, DDS
- Peoples Trust & Credit Union
- Platinum Sands Systems
- Real Estate Management Specialists
- Signature Woodworks
- St. James Evangelical Lutheran Church
- Swift Pay Tax Services
- Vogue Travel



# North Rosedale Park Civic Association Membership Application

Name(s) \_\_\_\_\_

Address \_\_\_\_\_

Zip Code \_\_\_\_\_

Phone \_\_\_\_\_

Email \_\_\_\_\_

Membership Dues	
Resident.....	\$60
Non-Resident .....	\$40
Business .....	\$40

Enclosed is \$ \_\_\_\_\_ in payment for dues for the year ending December 31, 2011.

Additional Donation enclosed \$ \_\_\_\_\_

Make checks payable to:  
**North Rosedale Park Civic Association or NRPCA**

Mail dues to:  
**Membership Secretary  
18445 Scarsdale, Detroit MI 48223-1333**

*Contributions, gifts and dues to NRPCA are not deductible as charitable contributions for Federal income tax purposes.*

## Be a Volunteer!

**Please tell us how you would be interested in helping.**

Areas of interest:

\_\_\_\_\_

\_\_\_\_\_

\_\_\_\_\_

\_\_\_\_\_

\_\_\_\_\_

\_\_\_\_\_

\_\_\_\_\_

\_\_\_\_\_

\_\_\_\_\_

\_\_\_\_\_

**Thank you for your support!**

## NRPCA 2011 Board of Directors

Ours is an active neighborhood, and NRPCA Board members are responsible for taking on assignments at the beginning of each year. In many cases, committees are formed to carry out the activities, and volunteers are always welcome. If you would like to work on any of the listed events or have comments or questions, contact the Board member for that activity

The Board meets on the 1st Thursday of every month except July and August.

### BOARD OF DIRECTORS AND THEIR ASSIGNMENTS

**President: Marsha Bruhn**  
*Code Enforcement, Neighborhood Open House*  
313-255-1884 • president@northrosedalepark.org

**Vice-President: James Johnson**  
*Capital Campaign, Detroit Works Project, By-Laws Revision, Sports Liaison, Greetings*  
313-534-4607 • vicepresident@northrosedalepark.org

### Immediate

**Past President: Lynn Garrett**  
*Nominating Committee, Past President's Raffle*  
313-835-6883 • pastpresident@northrosedalepark.org

**Director: Judy Barkey**  
*Halloween, Tattler Distribution, Block Captains*  
313-534-4589 • directorbarkey@northrosedalepark.org

**Director: Marva Blocker**  
*Spring Play, Fall Play, Park Players Liaison*  
313-537-3454 • directorblocker@northrosedalepark.org

**Director: Jeffery Knight**  
*Motor City Makeover, Project Day, Security, Ice Rink*  
313-255-0575 • directorknight@northrosedalepark.org

**Director: Michelle Loggins**  
*June Day, Website, Girl Scout Liaison, Community Events*  
313-231-0128 • directorloggins@northrosedalepark.org

**Director: Debra Norfleet**  
*Easter Egg Hunt, Steak Roast, Silent Auction, Tattler Advertising*  
313-534-4654 • directornorfleet@northrosedalepark.org

**Director: Betty Redditt**  
*Community House & Grounds, Home and Garden Tour, Pancake Breakfast*  
313-838-3256 • directorredditt@northrosedalepark.org

**Director: Audrey Smith**  
*Garage Sale, Mom to Mom, Ice Cream Social*  
313 570-3756 • directorsmith@northrosedalepark.org

**Director: Ian Watts**  
*Membership Appreciation, Volunteer Coordinator, Fish Fry*  
313-617-6723 • directorwatts@northrosedalepark.org

### APPOINTEES

Treasurer: Tom Ridgway • thomas.ridgway@gmail.com  
Membership Secretary: Karen Moore • kjmoore21@sbcglobal.net  
Recording Secretary: Mary Ratkowski • mratkows@juno.com  
Corresponding Secretary: Marcia Closson • mcllosson@aol.com  
Vacant House Task Force Representative: Clarendia Webb • 313-330-7844

### COMMUNITY HOUSE MANAGER

Nicole Daniels • 313-837-3416 • nrpca@att.net

### TATTLER NEWSLETTER

Editor: Linda Liang • nrpca\_tattleditor@yahoo.com  
Advertising Coordinator: Maria Bryant • 313-537-1560 • mariab19@sbcglobal.net

## Rent the Community House for Your Next Function!

Call Nicole Daniels at (313) 837-3416  
to reserve your upcoming event.

Benefits of renting the Community House...  
supports your community, house-sitter on duty,  
security on duty, short drive home!!!